

Useful info for potential Alumnae Initiate members

What does it mean to be an Alumna Initiate?

A member of DPhiE may have recently approached you about becoming an Alumna Initiate of the Sorority, and you're probably wondering what that means and how the process works.

Sharing the gift of sisterhood with women who exemplify our motto, mission and founding principles is an honor and a privilege for the members of Delta Phi Epsilon. Alumnae Initiation is a gift we share with the women in our lives who have not had an opportunity to join DPhiE through traditional collegiate recruitment, yet they are committed to living our values and ideals.



Our Motto

Esse Quam Videri

Translation: *To be rather than to seem to be*

Our Mission Statement

We inspire and empower our sisterhood to engage in a lifetime of leadership and service.

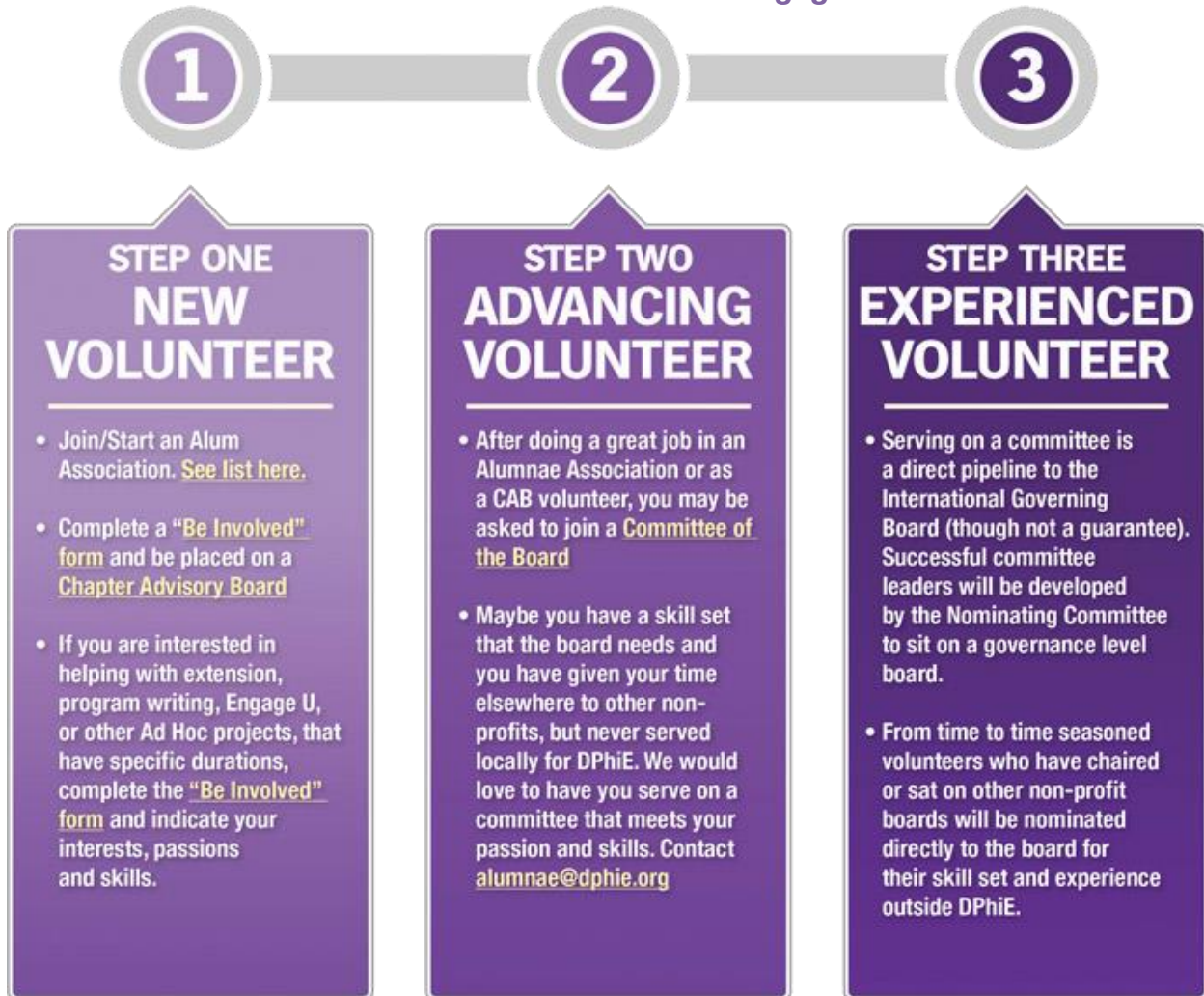
Our Founding Principles

Justic, Sisterhood and Love

Alumna initiates are encouraged to take part in the Sorority experience DPhiE has to offer all alumnae members. Alumna initiates are fully fledged members of the sorority, participate in our rituals, are included in membership communications, receive annual issues of the magazine, *The Triad*, join alumnae associations, volunteer and can even become a member of one of our Boards.

Useful info for potential Alumnae Initiate members

The DPhiE Model of Alumnae Engagement

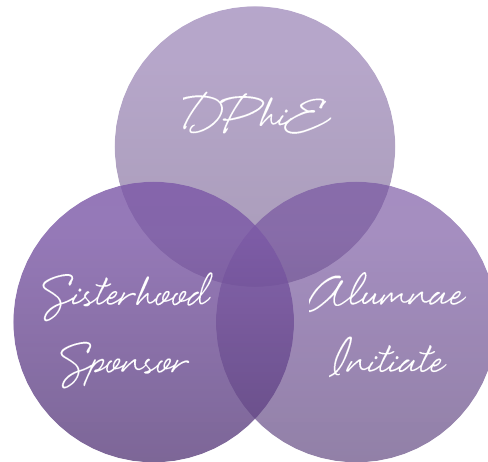


Alumnae Initiate Guidelines per the International By-laws:

An alumna initiate shall be any woman initiated into the sorority who was previously not initiated into another National Panhellenic Conference sorority or fraternity, who is not a collegian. Alumna initiate membership may be conferred upon any woman, not a college student, deemed worthy of membership according to the standards and ideals of Delta Phi Epsilon. Alumna initiate status may only be conferred by the International Governing Board President upon the recommendation of a collegiate chapter/colony, an alumnae association, or any member in good standing. Alumnae initiates shall have all the rights, privileges, and responsibilities of alumnae members.

Useful info for potential Alumnae Initiate members

Welcoming Alumnae Initiates into our Sisterhood



What is the process?

The member who nominates you will become your Sisterhood Sponsor. Once the nomination has been approved for Initiation by the International Governing Board, the Sisterhood Sponsor will work together with the Sorority – International Headquarters, Alumnae Association and/or Collegiate Chapter – to welcome and introduce you into our sisterhood.

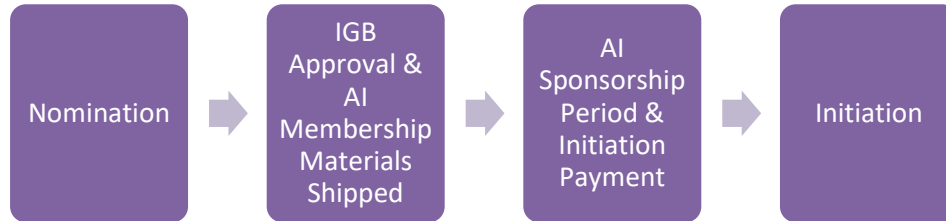
Nominations are accepted during February and September and coincide with our collegiate New Member process.

Once approved, you will receive a packet of New Member materials that includes a welcome letter, an invitation to membership (or bid card), our New Member Guide, Alumnae Membership Development Guide, our most recent issue of The Triad and a New Member pin. We'll also let you know about opportunities to join or form an alumnae association in your area.

You will work with your Sisterhood Sponsor to review the materials you receive (she will receive similar materials) and schedule your New Member* and Alumnae Initiation rituals. (*New Member ritual is optional. Rituals are ideally performed with a chapter and/or alumnae association, or at an International event, like Convention.)

Useful info for potential Alumnae Initiate members

The Alumnae Initiate Process: Nomination to Initiation



What does it cost to join?

The membership fees to join Delta Phi Epsilon are:

- ▲ New Member Fee of \$75 and includes:
 - Invitation to Membership
 - *Triad* Membership Magazine
 - Collegiate New Member Guide
 - Alumnae Initiate Sponsorship Toolkit
 - Alumnae PEARL Program Guide
 - Official Jewelry Brochure
 - Official New Member Pin
 - Processing, shipping & handling
- ▲ Initiation Fee starting at \$180 and includes:
 - Choice of Sisterhood Badge (initiation fee increases based on upgrade badge selection)
 - Membership Certificate
 - Lifetime subscription to the *Triad*
 - Processing, shipping & handling

Alumnae members of Delta Phi Epsilon show their support for the Sorority with annual alumnae dues. By paying your alumnae dues, you are supporting a legacy of sisterhood for generations to come.

What's next?

If membership in DPhiE is the right opportunity for you, be sure to follow up with the member who approached you about becoming an alumna initiate. Ask her to fill out the nomination form on your behalf, and she'll have some follow up questions for you to help her complete the nomination form. Once she submits the nomination form to the International Headquarters, you will be notified when your nomination has been approved by the International Governing Board and a staff member will let you know what the next steps are in the process to becoming a member of Delta Phi Epsilon.

Apply here: <http://www.dphie.org/alumnae-initiation>
Email the recommendation letter: alumnae@dphie.org